

actions

Abortion Care Training Incubator
for Outstanding Nurse Scholars



Envisioning Nursing Research into the Future



MONICA R. MCLEMORE PHD, MPH, RN
PROFESSOR* AND DIRECTOR, MANNING PRICE SPRATLEN
CENTER FOR ANTI-RACISM AND EQUITY IN NURSING
SCHOOL OF NURSING ENDOWED PROFESSOR OF HEALTH
PROMOTION
UNIVERSITY OF WASHINGTON
*APPOINTED IN NURSING, PUBLIC HEALTH, AND GENDER,
WOMEN, AND SEXUALITY STUDIES

The purpose of this session is to activate participants to understand how to retrofit, reform, and reimagine nursing research to right historical harms, to partner with people with lived experience and to improve health outcomes and advance health equity.

**Recognizing the Nacotchtank
and Piscataway People, the
First Residents of the land
that would become the District
of Columbia.**

Labor Acknowledgement*

- > I also acknowledge that the United States was built off of exploited labor of kidnapped African people. Much of what we know of this country today including its culture, economic growth, and development throughout history and across time, has been made possible by the labor of enslaved Africans and their ascendants who suffered the horror of the trans-Atlantic trafficking of their people, chattel slavery, and Jim Crow.

*This labor acknowledgement is one used by the Pandemic and Racism Community Advisory Group who center the experiences of Black and Indigenous populations in their work to dismantle racist policies and practices within PHSKC.



frankie manning



Agenda for tomorrow

UNIVERSITY of WASHINGTON

BE BOUNDLESS

Positionality

Research Trajectory to Date

Grants

- \$14.2 million since 2013* (none are federally funded to me – only learners)

Impact

- My research findings have been cited in 6 amicus briefs to the Supreme Court of the United States, a GAO report on midwifery workforce, an Equal Employment Opportunity Commission's final rule and interpretive guidance on the Implementation of the Pregnant Workers Fairness Act, and in 5 of the 12 bills passed as the “*M omnibus*” totaling \$100 million dollars

Publications

- 145 peer reviewed publications, OpEds and Commentaries; 54 podcasts; 11 book chapters; Multitude of IG live; 2 books (editor), feature in 2 documentary films and 1 HBO series, and 1 data visualization project

Students & Faculty Mentoring

- 52 students; 8 faculty; 8 postdocs; countless clinical learners

Definitions

Defining Anti-Racism

“The continual practice of unlearning internalized belief systems dictated by white supremacy, redistributing power, resources, and privilege to populations directly and disproportionately harmed by white supremacy, and redressing historical and contemporary biological, mental, spiritual, and social injustices enacted under white supremacy.”

– Elle Lett, PhD, AM, MBiostat (2023)

More Definitions

- > Dr Camara Jones' definition of health equity, which “is the assurance of the condition of optimal health for all people.”
- > Health equity will be experienced (not achieved, as Ryan J. Petteway wrote) when we set ambitious but attainable goals for the health of all humans and work together to realize those goals.” Language matters: why we need to stop talking about eliminating health inequities. Health affairs Tamarie A. Macon



An Important Discussion

- Pickler RH, Dorsey SG. Shifting Paradigms in Nursing Science. *Nurs Res*. 2022 Jan-Feb 01;71(1):1-2. doi: 10.1097/NNR.0000000000000558. PMID: 34772863.
- Julion WA, Reed MA, Swanson B, Schoeny ME. The need for a bold research agenda to address structural racism. *Nurs Outlook*. 2022 Sep-Oct;70(5):694-696. doi: 10.1016/j.outlook.2022.06.002. Epub 2022 Aug 4. PMID: 35933179.



The screenshot shows the top navigation bar of the Nursing Research journal website. The header includes links for 'Log in or Register', 'Subscribe to journal', and 'Get new issue alerts'. The journal title 'Nursing Research' is prominently displayed, along with its tagline 'Advancing the Science Improving Patient Care'. Below the title, there are dropdown menus for 'Articles & Issues', 'Collections', 'Calls for Papers', 'For Authors & Reviewers', and 'Journal Info'. The main content area features the article title 'Shifting Paradigms in Nursing Science' under the 'EDITORIAL' section. The authors listed are Rita H. Pickler and Susan G. Dorsey. A 'Download' button is visible, and a 'Metrics' button is located in the bottom right corner of the article preview.



The screenshot displays the 'ARTICLE IN PRESS' section of the Nursing Outlook journal website. It features the Elsevier logo on the left and the ScienceDirect logo in the center, with the text 'Available online at www.sciencedirect.com'. The journal title 'NURSING OUTLOOK' is shown on the right, along with the website URL 'www.nursingoutlook.org'. The article title 'The need for a bold research agenda to address structural racism' is centered, followed by the authors' names: 'Wrenetha A. Julion, Monique A. Reed*, Barbara Swanson, Michael E. Schoeny'. Below the authors' names, their affiliation is listed: 'College of Nursing, Rush University, Chicago, IL'.

Internal and External Pressure



ABORTION BILLS SIGNED BY GOVERNOR GAVIN NEWSOM IN 2022

- SCA 10** Atkins & Rendon
- SB 245** Gonzalez
- SB 1142** Skinner & Caballero
- SB 1245** Kamlager
- SB 1375** Atkins
- AB 657** Cooper
- AB 1242** Bauer-Kahan, Garcia & Bonta
- AB 1666** Bauer-Kahan
- AB 1918** Petrie-Norris
- AB 2091** Bonta
- AB 2134** Weber
- AB 2205** Carrillo
- AB 2223** Wicks
- AB 2586** Garcia & Rivas
- AB 2626** Calderon

California Continues To Build Upon Its Commitment to Reproductive Freedom & Expands Access to Abortion

California Future of Abortion Council

- Coalition of SRH organizations, California legislators, and Governor's Office
- AB 1918 – A bill to establish a California Reproductive Health Service Corps to diversify the RH workforce
 - Originated and championed by ACTIONS predoctoral scholar Bethany Golden; supported by ACTIONS and Training in Early Abortion for Comprehensive Healthcare (TEACH)
- **\$20m in scholarships, stipends, and loan repayment for RNs, APCs, and other aspiring providers who seek training to provide full-scope reproductive healthcare, including abortion.**
- **\$20m in workforce development grants to create additional training opportunities**





Solicitation #: ARPA-H-SOL-24-107

THE ADVANCED RESEARCH PROJECTS AGENCY FOR HEALTH (ARPA-H) SPRINT FOR WOMEN'S HEALTH REQUEST FOR SOLUTIONS (RFS)

Solicitation #: ARPA-H-SOL-24-107



Melinda French Gates: The Enemies of Progress Play Offense. I Want to Help Even the Match.

May 28, 2024



\$1Billion

\$240 to 18 orgs

\$200 to 12 individuals

\$250 coming to Levers for Change

- + Center for Reproductive Rights
- + Collaborative for Gender + Reproductive Equity
- + Collective Future Fund
- + Community Change
- + Institute for Women's Policy Research
- + MomsRising Education Fund
- + Ms. Foundation for Women
- + National Domestic Workers Alliance
- + National Partnership for Women & Families
- + National Women's Law Center
- + New America
- + The 19th
- + Roosevelt Institute
- + States United Democracy Center
- + TIME'S UP Legal Defense Fund
- + Washington Center for Equitable Growth

Consistent with Community Engagement

WE WILL CO-CREATE THE REST OF THIS EXPERIENCE

Mapping the Future

People (Retrofit)

- Future Workforce

Place (Reform)

- Community Engagement

Things (Reimagine)

- Community Investment



Health, Well-Being &
Sustainability

Rules of Tumor Cell Development and Their Application to Biomarkers for Ovarian Cancer

Monica R. McLemore, MPH, RN, Christine Miaskowski, RN, PhD, FAAN,
Bradley E. Aouizerat, PhD, Lee-may Chen, MD, and Marilyn Dodd, RN, PhD, FAAN



Considerations for Retrofitting Research Programs Toward Health Equity



PRIORITY:
Pregnancy
CoRoNaVirus
Outcomes
RegIsTrY



What Do We Need?

- > **Systematic Reviews of Existing Data Gaps**
- > **Meta-Analyses and Pooled Data**
 - Reporting of Counts in Small Populations
- > **New Methods (and Transparency) in Incremental Studies/Work**
- > **Reimagining Science and Traditional Trajectory**
 - Descriptive Work, Intervention Development, Clinical/Comparative/Randomized Trials
- > **Understanding Community Connection and Oversight to Dynamic Changes in Studies to Connect Aims->Theory->Methods->Analysis**
- > **Planning YEAR grants**
- > **Truth and Reconciliation – Retrofitting Past Harmful Research**



So, WHAT? Specific to Social/Political/Moral Determinants of Health? Justice, Equity, Diversity, Inclusion?

- > **Screening to determine these things**
 - Sampling criteria/Genetic Testing
 - Algorithmic Bias, AI, Technology
- > **Symptom recognition**
 - Insurance does not equal availability (Hyde/Helms/Military)
 - Access does not mean full range of options
- > **Treatment options**
- > **THEORY SHOULD DRIVE RESEARCH SAMPLING**
- > **Institutional Review Boards and So-Called Innovation**
- > **Team Composition and Research Question Generation Process**



Community Data Use Agreements and Participatory Budgeting



Accepted Article

Power and Positionality in Participatory Budgeting

Airin D Martinez¹

American Behavioral Scientist
2022, Vol. 0(0) 1–15
© 2022 SAGE Publications
Article reuse guidelines:
sagepub.com/journals-permissions
DOI: 10.1177/00027642221086954
journals.sagepub.com/home/abs

Abstract

There have been few analyses that discuss how power relations present in participatory budgeting (PB) may hinder or facilitate the future of PB. Drawing from PB examples in the United States we discuss the importance of power and positionality analyses during PB stages with the most deliberative participation for community members: forming steering committees, holding local assemblies, and selecting budgets. We discuss power struggles that stem from the lack of transparency in establishing budgets and representing implicated actors in communities. We discuss the importance of analyzing the positionality of municipal actors and community members throughout the life of PB projects. The paper ends by suggesting lessons that future PB initiatives can glean from community-based participatory research (CBPR) in public health, specifically, engaging in co-learning processes, capacity building among all partners, and the equitable distribution of resources between communities. These CBPR principles may facilitate countering narratives about community participation and foment institutional change in the ways local jurisdictions allocate PB budgets and prioritize policy agendas.

Keywords

community-based participatory research, power, positionality, participatory budgeting, united states

Data Use Guidelines for the Supporting Our Ladies And Reducing Stress to prevent preterm birth (SOLARS) Study Including Authorship of Publications and Presentations, Policies and Procedures, Access to Data and Related Matters

SOLARS Leadership Team

Brittany Chambers, PI

brittany.chambers@ucsf.edu

Anu Manchikanti Gomez, Co-PI

anugomez@berkeley.edu

Brianne Taylor, Program Manager

Brianne.Taylor@ucsf.edu

Overview

The SOLARS Study has established these guidelines to ensure that decisions about data use, publishing and presenting, and dissemination of the findings using SOLARS data by all parties are informed by the principles and philosophy of community-based participatory research (CBPR).¹ The SOLARS Study has also been informed by the principles of reproductive justice; as such, we center the lived experiences of Black and Latino/x communities and invite members of these communities to help guide the study through the SOLARS Community Accountability Council (S-CAC), comprised of study participants and representatives from each of our partnering sites. Reproductive justice is defined as “as the human right to maintain personal bodily autonomy, have children, not have children, and parent the children we have in safe and sustainable communities.”² The Black Mamas Matter Alliance (BMMA) has defined best practices and principles to conduct research with, for, and by Black mamas, which have been applied in SOLARS.³

Aligned with CBPR approaches and BMMA’s best practices and principles, SOLARS has committed to a dissemination process that promotes high-quality research and is fair, inclusive and allows people to grow in their skills, knowledge, and experiences, while upholding the community’s power with regards to data use. The SOLARS leadership team (i.e., SOLARS PIs and Program Manager) acknowledge that SOLARS data have been collected in partnership with Black and Latina women and community organizations and clinics serving these populations. As a result, Black and Latina/x women and community organizations and clinics will be involved in decision-making in regard to SOLARS data access and use. We have established the S-CAC to guide the implementation of these data use guidelines. These guidelines intend to make clear:

Past Issues and Limitations to Be Mindful Of

Cis/Hetero sampling

> Proxies

- Marital Status; Income; Education

> Study Logistics

- Compensation and Participation
- Human, Money, Space, Time and Reputational Resource Allocation

> Community Oversight and Review

- Study Design
- Data Analysis and Visualization

I like, I wish, I wonder



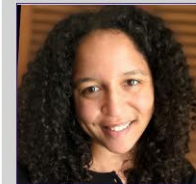
Conducting Equity Informed Peer Review: A Workshop for Journal Editors



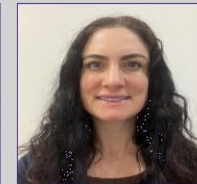
Anti-Racism & DEI Course Materials Pilot Project



Anti-Racism & DEI Course Materials Pilot Project



Kahlea Williams



Emily Leaver



Dr. Joycelyn
Thomas



Dr. Bethany
Rolfe Witham



Dr. Monica
McLemore

Questions? Comments? Suggestions? Feedback? Discussion

Monica R. McLemore – mclemor@uw.edu



Instagram, Threads, LinkedIn, Facebook,
YouTube: @mclomoremr