



# *2021 NATIONAL NURSING RESEARCH ROUNDTABLE*

**NURSING RESEARCH OF THE FUTURE:  
USING CLINICAL BIG DATA TO EXPLORE HEALTH  
INEQUITIES & SOCIAL DETERMINANTS OF HEALTH**



National Institute  
of Nursing Research

---

# NATIONAL NURSING RESEARCH ROUNDTABLE

NINR UPDATE – MARCH 5, 2021

Shannon N. Zenk, PhD, MPH, RN, FAAN

Director, NINR

# Presentation Overview

- NIH News
- NINR News
- Vision
- Strategic Plan
- NNRR Introduction





National Institutes of Health

NIH NEWS



# NIH's Commitment to Ending Structural Racis



- NIH is committed to instituting new ways to support diversity, equity, and inclusion, and identifying and dismantling any policies and practices that may harm our workforce and our science.
- NIH established the **UNITE** initiative to address structural racism in biomedical research with the goal of ending racial inequity.
- Primary goals of the initiative are:
  - U** Understanding stakeholder experiences through listening and learning
  - N** New research on health disparities, minority health, and health equities
  - I** Improving the NIH culture and structure for equity, inclusion and excellence
  - T** Transparency, communication, and accountability with our internal and external stakeholders
  - E** Extramural research ecosystem: changing policy, culture and structure to promote workforce diversity

[nih.gov/ending-structural-racism](https://nih.gov/ending-structural-racism)

# New Health Disparities Research

UNITE-Common Fund Transformative Health Disparities Research Initiatives: Bolster innovation, solve challenges, and address emergent opportunities in health disparities research

<https://commonfund.nih.gov/healthdisparitiestransformation>

Notice of Intent to Publish a Funding Opportunity Announcement: Understanding and addressing the impact of structural racism and discrimination on minority health and health disparities

<https://grants.nih.gov/grants/guide/notice-files/NOT-MD-21-016.html>



**Ending  
Structural  
Racism**



[nih.gov/ending-structural-racism](https://nih.gov/ending-structural-racism)

# NIH Funds Cohort Recruitment and Development Program to Enhance Faculty Diversity: Faculty Institutional Recruitment for Sustainable Transformation (FIRST) Program



[https://commonfund.nih.gov/first/funding\\_opportunities](https://commonfund.nih.gov/first/funding_opportunities)

## Stephen I. Katz Early Stage Investigator Research Grant Program



**Dr. Stephen I. Katz**

- **PAR-21-038:** Stephen I. Katz Early Stage Investigator Research Project Grant (Parent R01 Clinical Trial Not Allowed)
- **PAR-21-039:** Stephen I. Katz Early Stage Investigator Research Project Grant (Parent R01 Basic Experimental Studies with Humans Required)

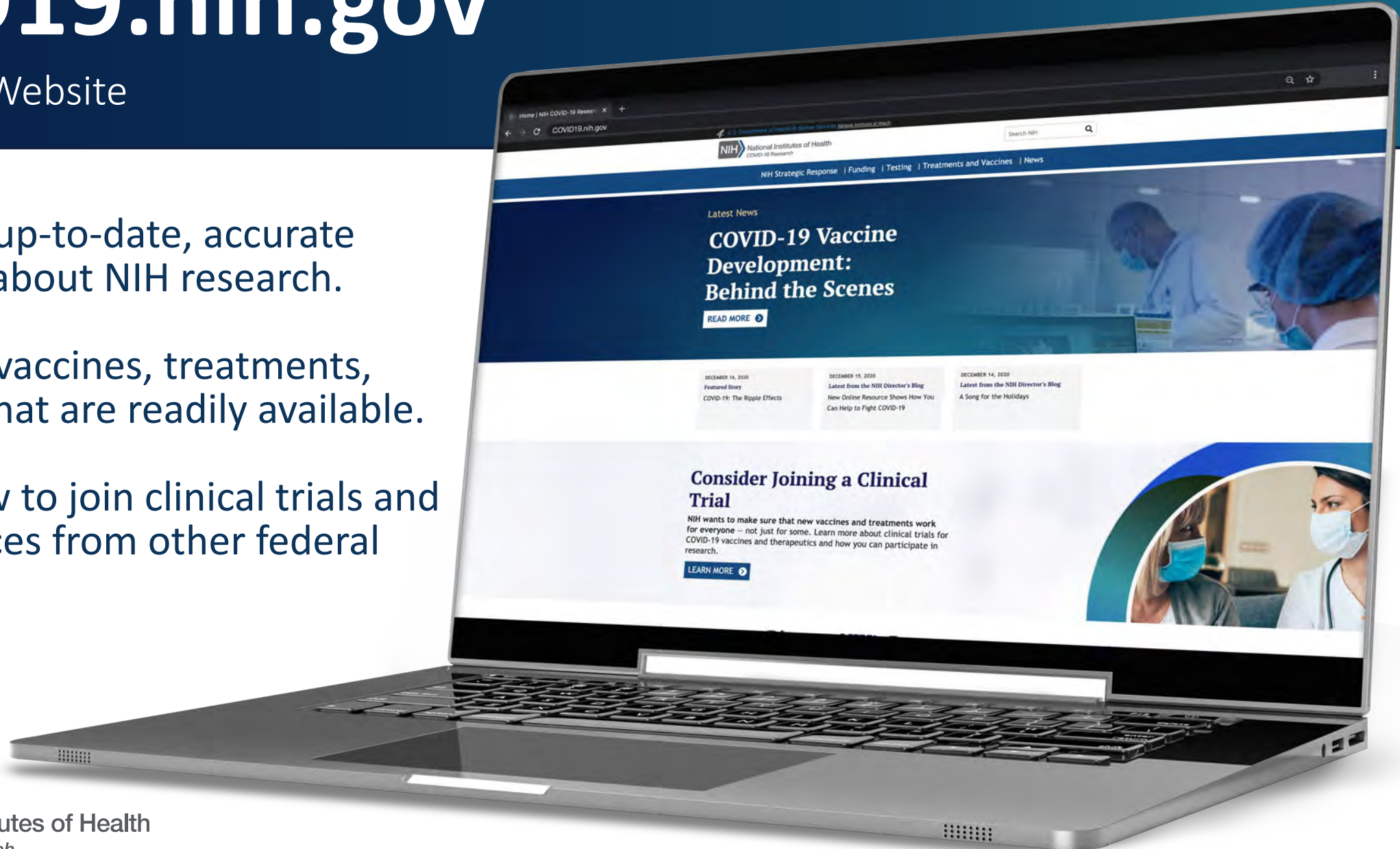
<https://grants.nih.gov/funding/katz-esi-r01.htm>



# COVID19.nih.gov

NIH COVID-19 Website

- ✓ Get trusted, up-to-date, accurate information about NIH research.
- ✓ Learn about vaccines, treatments, and testing that are readily available.
- ✓ Find out how to join clinical trials and view resources from other federal agencies.





# National Institute of Nursing Research

NINR NEWS

# NINR RADx Initiative Awards

## **RADx UP (Underserved Populations)**

- Reaching Communities through the Design of Information Visualizations (ReDIVis) Toolbox for Return of COVID-19 Results
- Alive Church Network: Increasing COVID-19 Testing in Chicago's African American Testing Deserts

## **RADx-rad (Radical)**

- Multi-modal Wireless COVID Monitoring & Infection Alerts for Concentrated Populations



# NINR Joins HEAL Executive Committee

- HEAL Initiative established to develop long-term solutions to the national opioid crisis
- Has already supported 100's of projects across the U.S.
- NINR recently joined the HEAL Executive Committee

## The Helping to End Addiction Long-term<sup>SM</sup> Initiative

Supporting science-based solutions to the opioid crisis

### What is the NIH HEAL Initiative?

The Helping to End Addiction Long-term<sup>SM</sup> Initiative, or NIH HEAL Initiative<sup>SM</sup>, is an aggressive, trans-agency effort to speed scientific solutions to stem the national opioid public health crisis. Almost every NIH Institute and Center is accelerating research to address this public health emergency from all angles.

The initiative is funding hundreds of projects nationwide. Researchers are taking a variety of approaches to tackle the opioid epidemic through:

- Understanding, managing, and treating pain
- Improving treatment for opioid misuse and addiction

[Learn about the initiative](#)



**Website:** [heal.nih.gov](https://heal.nih.gov)



# NINR Events

## Maternal Health Workshop: Summary Now Available



Collaborating Institutes and Offices: NICHD, NIMHD, ORWH, THRO  
[www.ninr.nih.gov/sites/files/docs/MaternalHealthWorkshop\\_Summary\\_508c.pdf](http://www.ninr.nih.gov/sites/files/docs/MaternalHealthWorkshop_Summary_508c.pdf)

## NINR and NIMHD Joint Directors' Seminar: The Science of Structural Racism



David R. Williams, PhD



## Dr. Shannon Zenk Sworn in as NINR Director



# My First Months at NINR

- Meetings with many groups and individuals to gather input on planning the future of NINR:
  - NINR staff
  - Members of the National Advisory Council for Nursing Research
  - NIH leadership and directors of many of the other NIH Institutes, Centers and Offices
  - Nursing organizations and outside groups with interests in nursing science (e.g., FNINR, AACN, AAN, Nursing Community Coalition, APHA PHN section, ISONG, and many others...)
- Presentations
  - Houston Methodist Center for Nursing, Education, and Practice, Back to Science Symposium
  - University of Colorado College of Nursing, Research and Scholarship Symposium
  - AACN Doctoral Education Conference and Student Policy Summit
  - Vanderbilt University School of Nursing, PhD Intensive Session
  - George Washington University School of Nursing, Center for Health Policy and Media Engagement
  - Yale University School of Nursing, Promoting Health in the Community Course
  - Northeast Ohio Year of the Nurse 2020
  - FNINR Nightingala 2020
  - 2020 State of the Science Congress (CANS)



# VISION FOR NINR



National Institute  
of Nursing Research



# Nursing Science's Contribution – A Holistic Perspective



# VISION FOR NINR

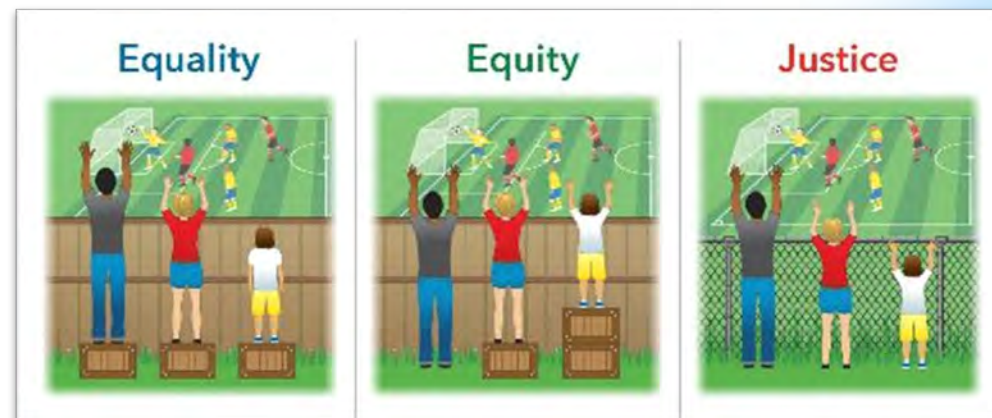
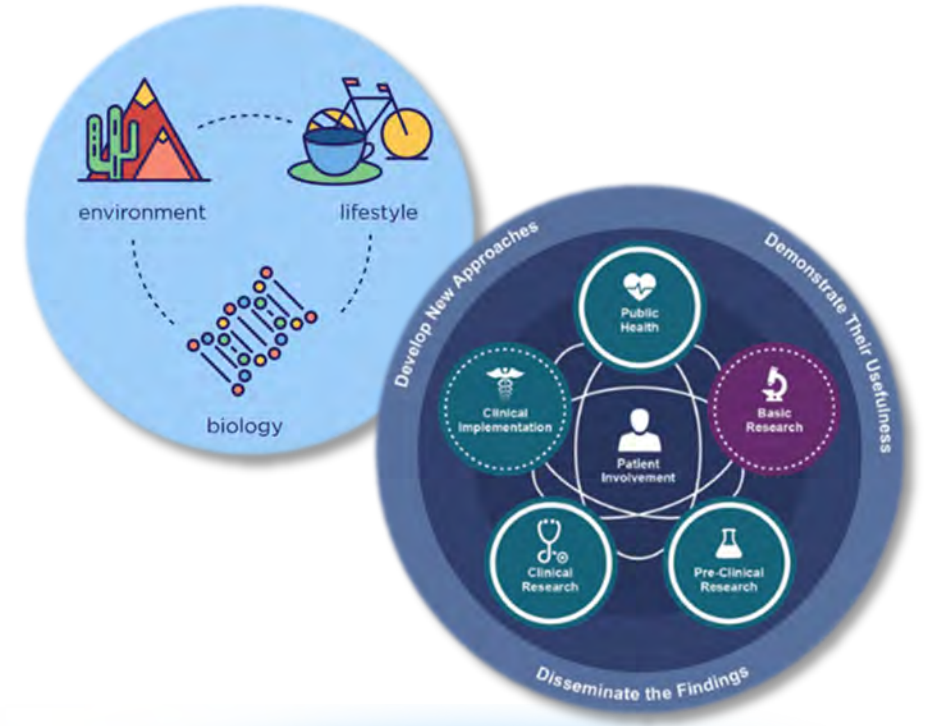


To use nursing's holistic perspective to improve individual and population health and advance health equity by bridging biomedical science and health care delivery with the realities of peoples' lives and living conditions, or social determinants of health.



# Taking Nursing Science to New Levels

- Push discoveries in multilevel integration
  - Molecular to the macro
  - Health care and community approaches
- Prioritize social determinants of health
- Identify practice and policy solutions and their effective implementation



## Key Principles For Our Process

- Think **boldly**; think **differently**
- Think about the end at the beginning: plan for **translation**
- Demonstrate **impact**
- Embrace **change** and **opportunity**
- **Mentor** the next generation
- We want to hear from you!





---

# We Want to Hear from You!



**Strategic Planning at NINR...** *A Bold New Agenda for Nursing Research*

NinrStrategicPlan@mail.nih.gov

[www.ninr.nih.gov/strategicplan](http://www.ninr.nih.gov/strategicplan)

# Annual Meeting of the National Nursing Research Roundtable

- Share advances in science and practice
- Identify, advance, leverage research resources
- Assess research challenges, gaps, redundancies, opportunities
- Support strategies, innovations, policy initiatives
- Foster communication, collaboration, dissemination while informing research efforts nationally



# Annual Meeting of the National Nursing Research Roundtable



**“Nursing Research of the Future: Using Clinical Big Data to Explore Health Inequities and Social Determinants of Health”**

# The Health and Health Care Landscape

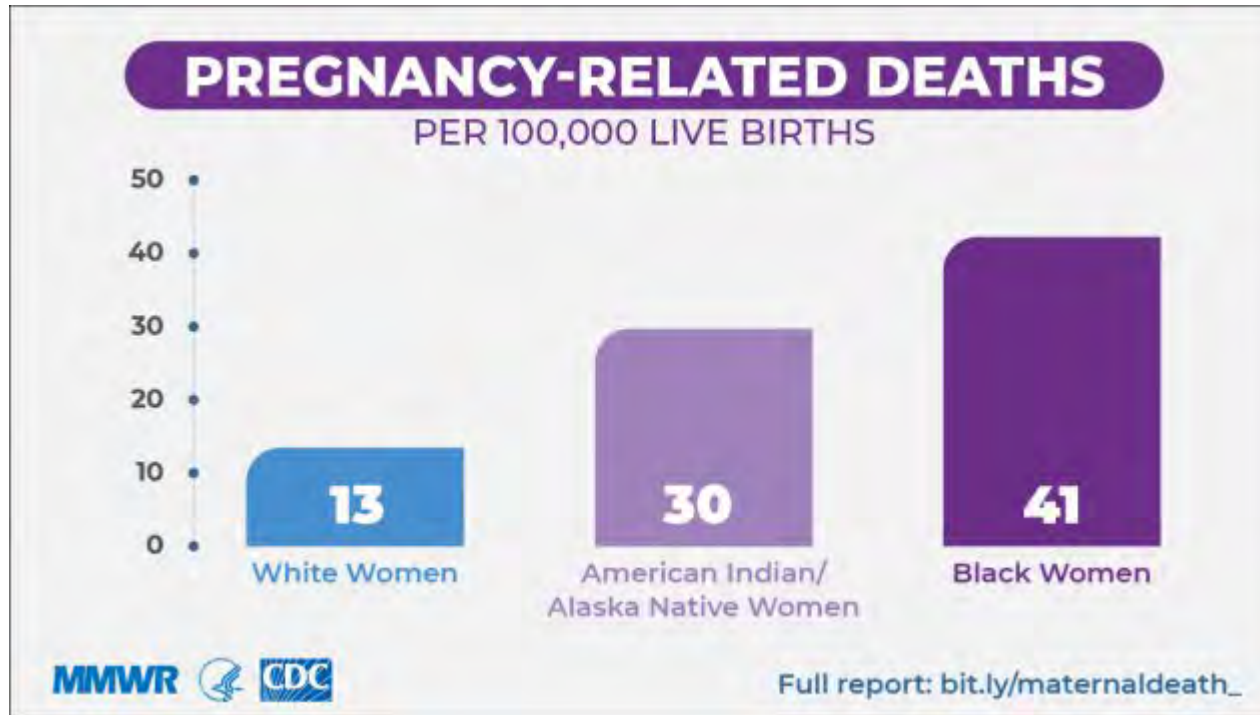
- Pressing health challenges and persistent health inequities
- Broader recognition of racial and social injustices and their health effects
- Public demand for change
- **Urgently needed nursing practice and policy solutions**



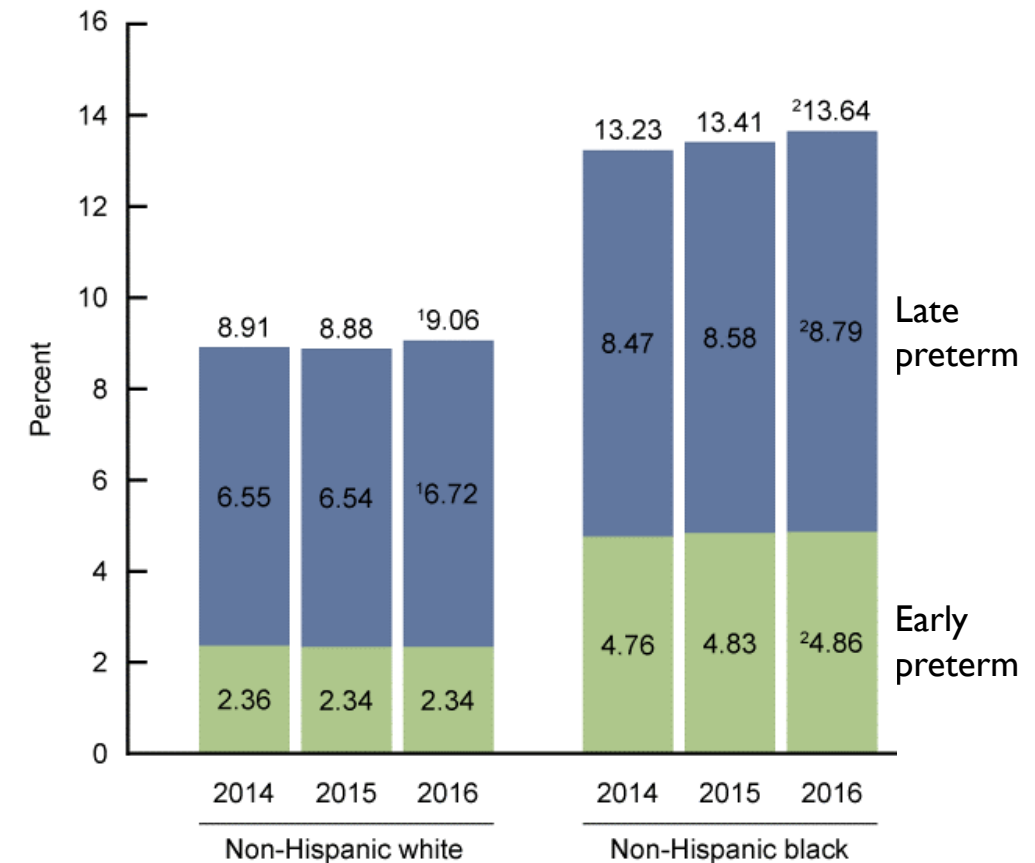


# Maternal Mortality And Preterm Birth Rates (CDC)

## Maternal Mortality (2007-2016)

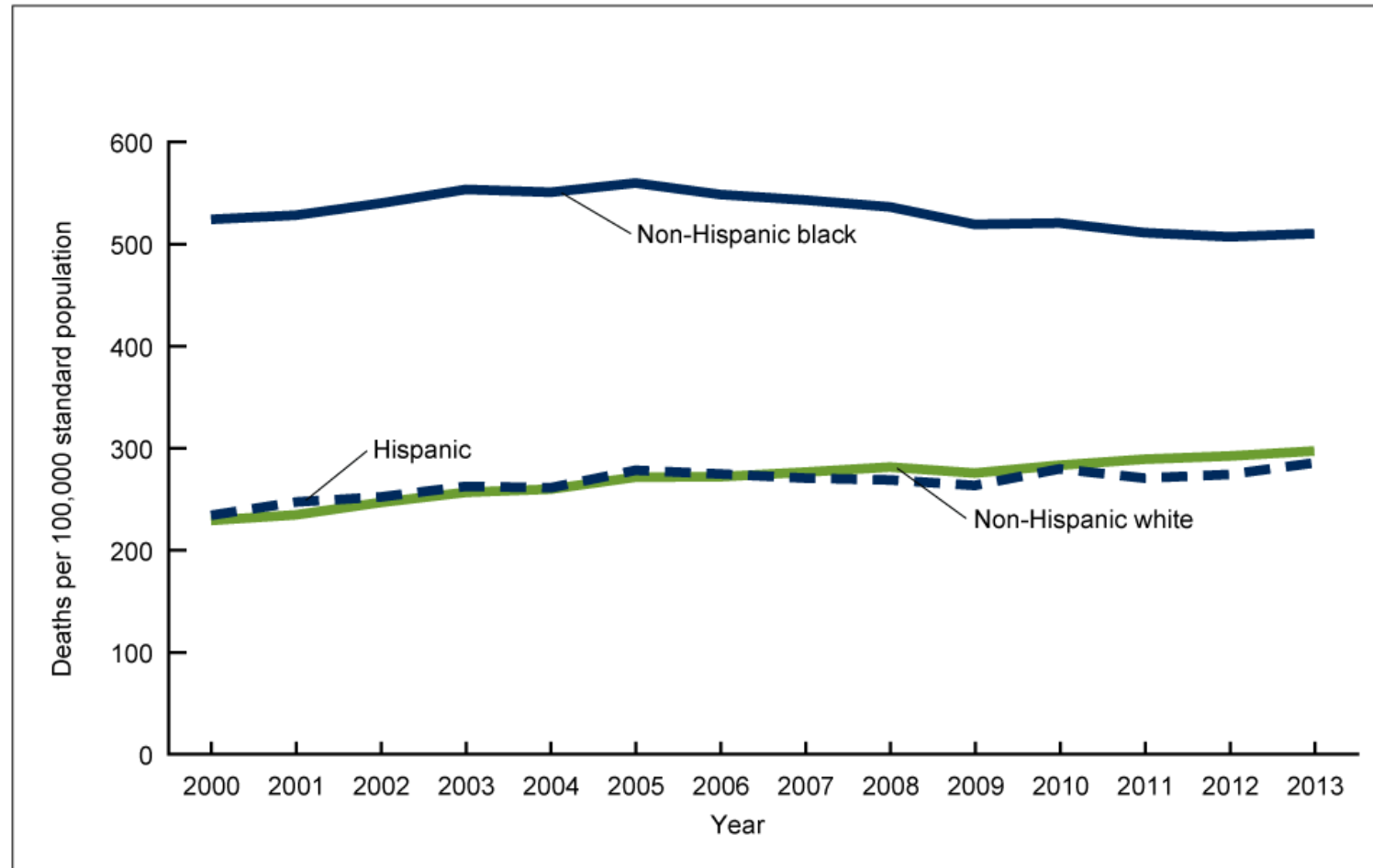


## Preterm Birth (2014-2016)



## Hypertension-Related Mortality, 2000-2013 (CDC)

Figure 3. Age-adjusted hypertension-related death rates, by race and Hispanic origin: United States, 2000–2013



NOTES: Linear increases for the non-Hispanic white population from 2000 through 2013 and for the Hispanic and non-Hispanic black populations from 2000 through 2005 are statistically significant at the  $p < 0.05$  level. Linear decreases for the non-Hispanic black population from 2005 to 2013 and for the Hispanic population from 2005 to 2009 are statistically significant at the  $p < 0.05$  level. Hypertension-related deaths are identified using ICD-10 codes I10, I11, I12, I13, and I15 for underlying and contributing causes of death, according to the *International Classification of Diseases, 10th revision* (ICD-10). Access data table for Figure 3 at: [http://www.cdc.gov/nchs/data/databriefs/db193\\_table.pdf#3](http://www.cdc.gov/nchs/data/databriefs/db193_table.pdf#3). SOURCE: CDC/NCHS, National Vital Statistics System, Mortality.

# Community Environments and COVID-19

## Risk for COVID-19 Infection, Hospitalization, and Death By Race/Ethnicity

Updated Feb. 18, 2021 [Print](#)

| Rate ratios compared to White, Non-Hispanic persons | American Indian or Alaska Native, Non-Hispanic persons | Asian, Non-Hispanic persons | Black or African American, Non-Hispanic persons | Hispanic or Latino persons |
|---|--|-----------------------------|---|----------------------------|
| Cases <sup>1</sup>                                  | 1.9x   | 0.7x                        | 1.1x  | 1.3x                       |
| Hospitalization <sup>2</sup>                        | 3.7x   | 1.1x                        | 2.9x  | 3.2x                       |
| Death <sup>3</sup>                                  | 2.4x   | 1.0x                        | 1.9x  | 2.3x                       |

Race and ethnicity are risk markers for other underlying conditions that affect health including socioeconomic status, access to health care, and exposure to the virus related to occupation, e.g., frontline, essential, and critical infrastructure workers.



**“Nursing Research of the Future: Using Clinical Big Data to Explore Health Inequities and Social Determinants of Health”**

- I. Capturing and Exploring Data on Social Determinants of Health to Improve Care and Reduce Health Disparities
- II. Mining Data to Inform Clinical Interventions
- III. Panel Discussion with Presenters/Participants